



Stainless Steel Extension Mast Lightning rod elevation

Stainless Steel Extension Mast 1D+



Made of stainless steel, the extension masts allow a lightning conductor to be raised up to 6 m without guying.

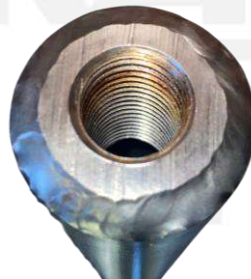
The various components are assembled together by fitting them together.

The end of the **AFC1242MR** mast is equipped with a stainless steel socket threaded to M20 to accommodate the Active 1D+ Early Streamer Emission without additional accessories.

The **AFC1442MR** mast kit (including 2 masts, one with a welded socket for fixing the Active 1D+ Early Streamer Emission) allows to reach a height of 4 meters.

The **AFC1642MR** mast kit (including 3 masts) allows to reach a height of 6 meters.

Details mast 1



Details mast 2



Details mast 3



Characteristics :

Reference :	AFC1242MR	AFC1442MR	AFC1642MR
Designation :	Stainless steel mast 2m 1D+	Set of stainless steel masts 4m 1D+	Set of stainless steel masts 6m 1D+
Length (m) :	2,00	4,00	6,00
Outer diameter (mm) :	42	42	42
Weight (kg) :	6,2	14,7	23,2
Material :	304L stainless steel		
Extremity :	Stainless steel socket M20		

Franklin Technologie[®] - A full range of lightning and overvoltage protection.

In the continue framework of its products, Franklin France shall be entitled to modify specifications without notice