

REFERENCES

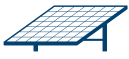
FRANKLIN FRANCE



W W W . F R A N K L I N - F R A N C E . C O M

CATEGORIES

FRANKLIN FRANCE



ENERGY



STADIUMS



TRANSPORT



HISTORICAL MONUMENTS



INDUSTRIES



INSTITUTIONS



FRANKLIN FRANCE

Franklin France, specialist in protection against lightning, is recognized both nationally and internationally to become one of the world leaders in this field. Through its drive for innovation and competitiveness, the company is present in more than 80 countries worldwide.

Certified ISO 9001 version 2015, Franklin France is constantly evolving and draws its wealth from the quality of its management and its experts.

Obtaining the Qualifoudre standard testifies to the quality of the services in 5 areas: Manufacturing, Lightning Risk Analysis, Technical Studies, Installations and Verification with qualified personnel from level I to IV.



FRANKLIN FRANCE

AN INTERNATIONAL SCALE



Distribution

in more than 80 countries



References

in all business sectors



Export

represents 50% of turnover

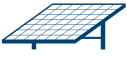


+ than 150,000 ESEs

sold worldwide



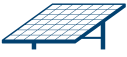
ENERGIES



LEREXCOM PETROLEUM IN THE DEMOCRATIC REPUBLIC OF CONGO

Lerexcom Petroleum is an oil company operating in the exploration, production and distribution of oil and gas sector. Thanks to the collaboration with Franklin France, Lerexcom Petroleum can reinforce the security of its infrastructures and guarantee the continuity of its operations, while meeting the highest security standards in terms of lightning protection.

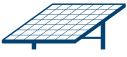




SOLAR FIELDS IN MALAYSIA

Franklin France also ensured the protection of another solar field, in particular that located in Malaysia. An image reveals a counter showing a total of 68 lightning strikes in just 2 years. This is also the highest meter recorded in our company, an impressive figure which highlights the importance of protection against lightning.

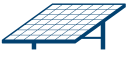




SOLAR FIELDS IN BURUNDI

Solar fields in Burundi play a crucial role in the production of renewable energy in the country. Thus, thanks to the installation of Active ID® lightning arresters, solar fields contribute to the country's energy transition and sustainable development, while being protected against the hazards of lightning.

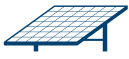




ORYX IN TANZANIA

As an energy company, Oryx can play a key role in providing energy to Tanzanian communities, supporting industrial development, the transport sector and access to electricity in rural areas. The company thus contributes to the improvement of living conditions and the socio-economic growth of the country. Oryx has worked with Franklin France for lightning protection and other services related to facility security.





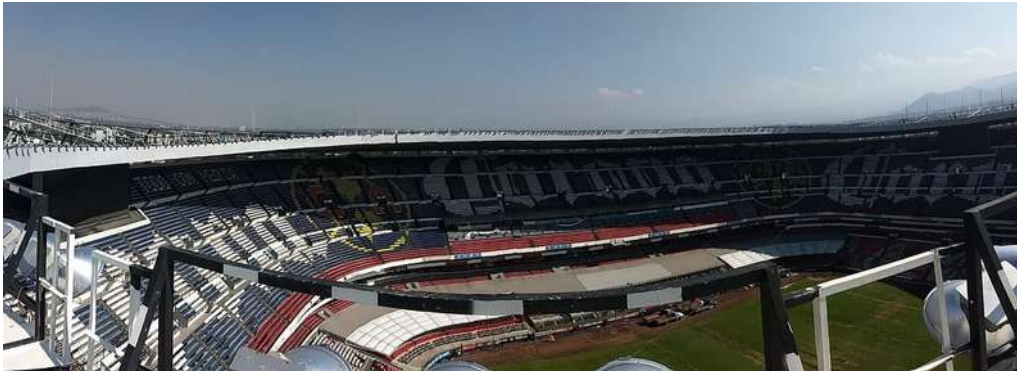
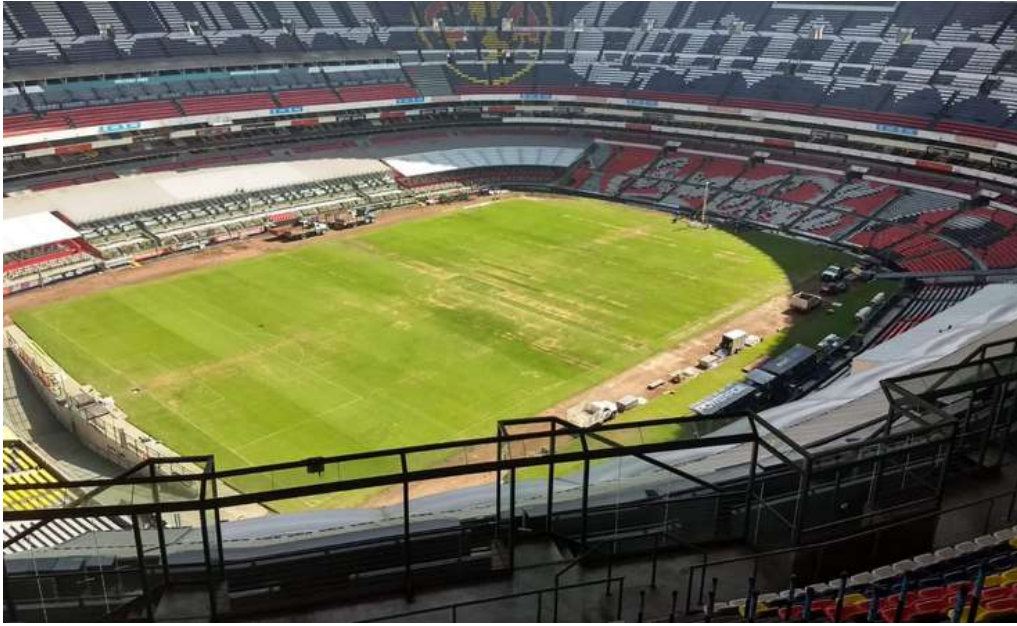
ALBIOMA IN FRANCE

This company specializes in the production of renewable energy, in particular from biomass and solar energy.

With the installation of the Active 2D®, we are preserving the infrastructure and equipment essential for sustainable energy production.

A wide-angle, low-perspective shot of a large stadium. The foreground is dominated by a lush green grass field, with a white line visible near the bottom. The stadium seating is visible in the background, appearing as a dense, patterned structure. The sky above is filled with dramatic, grey clouds, suggesting an overcast or stormy day. The overall mood is atmospheric and grand.

STADIUMS



AZTECA STADIUM IN MEXICO

Thanks to its expertise and innovative solutions, Franklin France has carried out a thorough risk assessment of lightning strikes and has designed a protection system adapted to the specific characteristics of the Azteca stadium. This collaboration has ensured the safety of players, spectators and stadium infrastructure, minimizing the risk of fire, property damage and disruption to sporting events. Thus, the Azteca stadium can continue to host world-class sporting events in complete safety.





PSG CAMPUS IN FRANCE

The PSG Campus, being a large-scale facility, is not immune to the risk of lightning strikes. Thanks to the use of Franklin France's state-of-the-art system, the Active 1D®, the latter has proactively protected itself against the harmful effects of lightning.

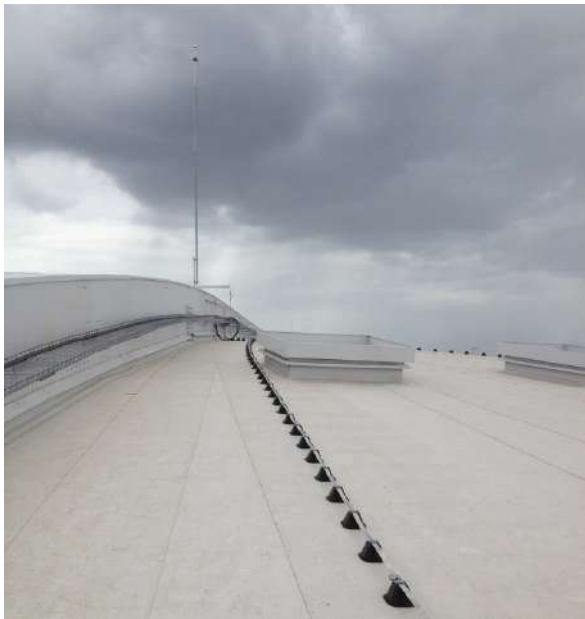




SIG STADIUM IN ALGERIA

The implementation of these lightning protection measures, in collaboration with experts in the field such as Franklin France, contributes to ensuring the safety of the SIG Stadium (Stade International de Guelma). Indeed, these measures aim to divert and dissipate the energy of the lightning, thus reducing the potential damage caused by a direct strike.



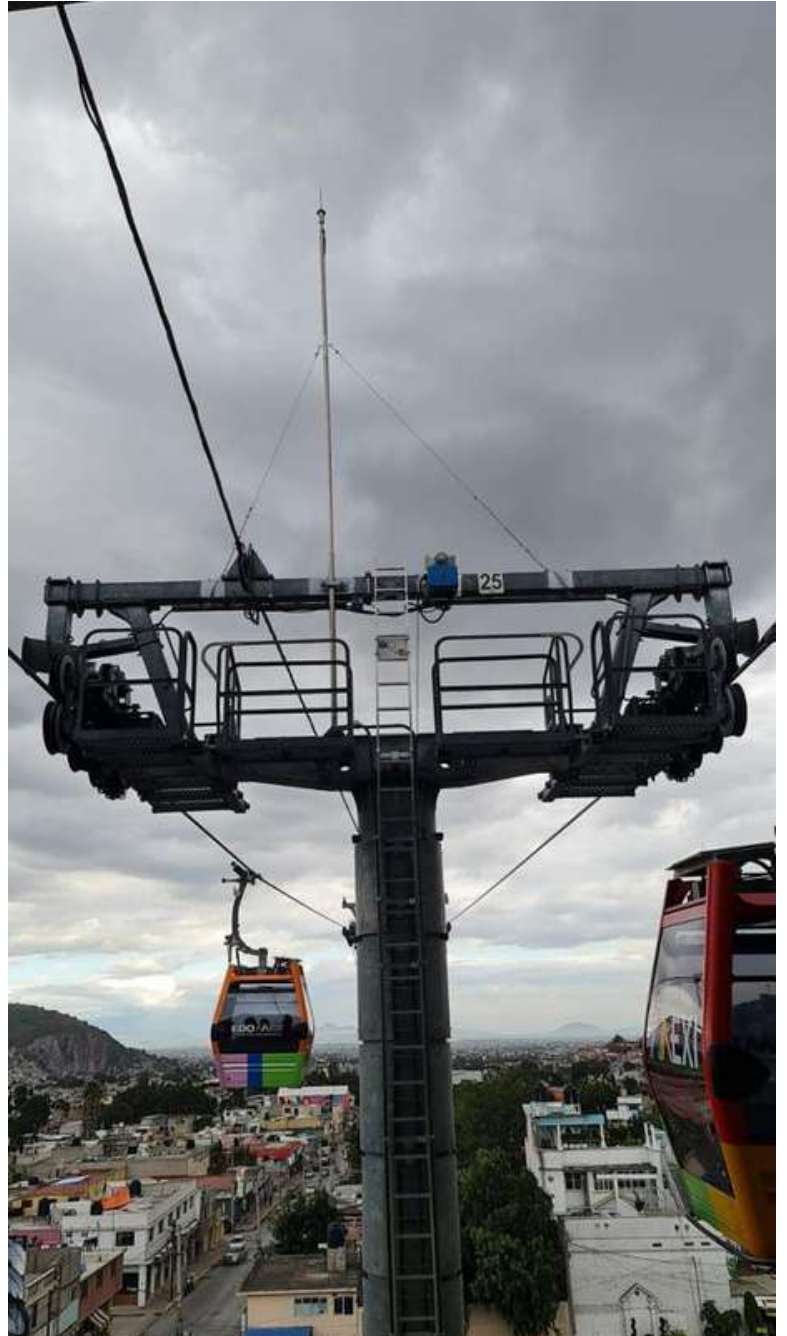


PIERRE MAUROY STADIUM IN FRANCE

Lightning is a potential risk for structures such as the Pierre Mauroy Stadium, due to its size and height. A direct strike of lightning can cause significant structural damage and pose a danger to people inside. To minimize these risks, lightning protection systems such as the Active 2D® are particularly effective.

TRANSPORT





CDMX CABLE CAR

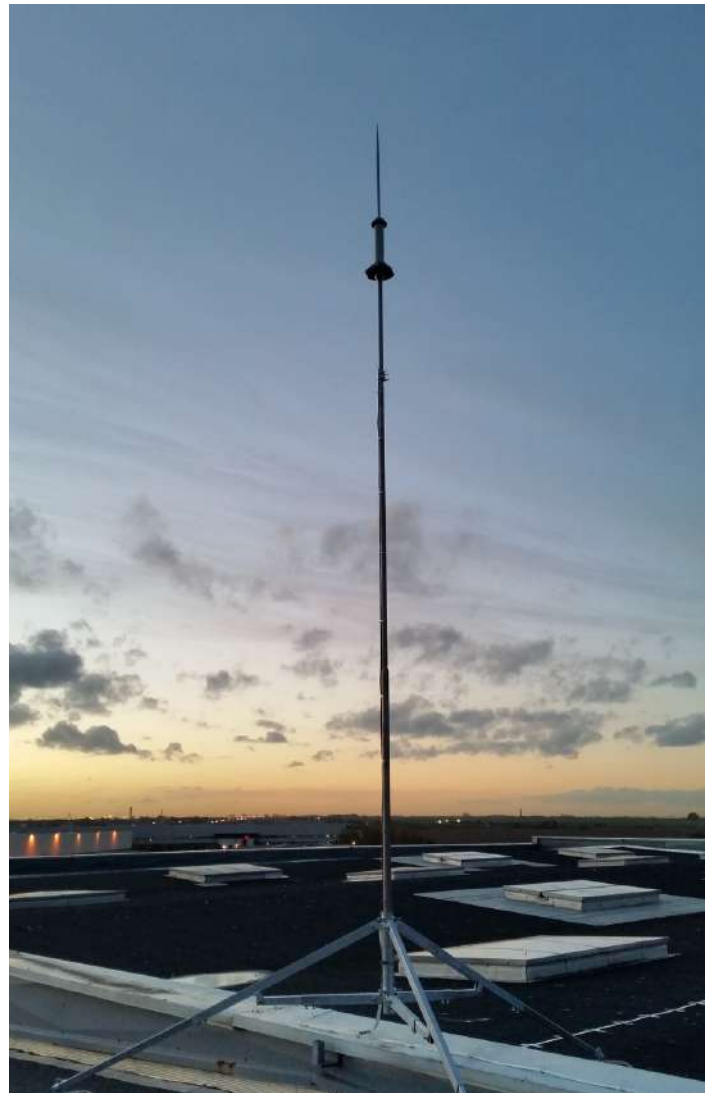
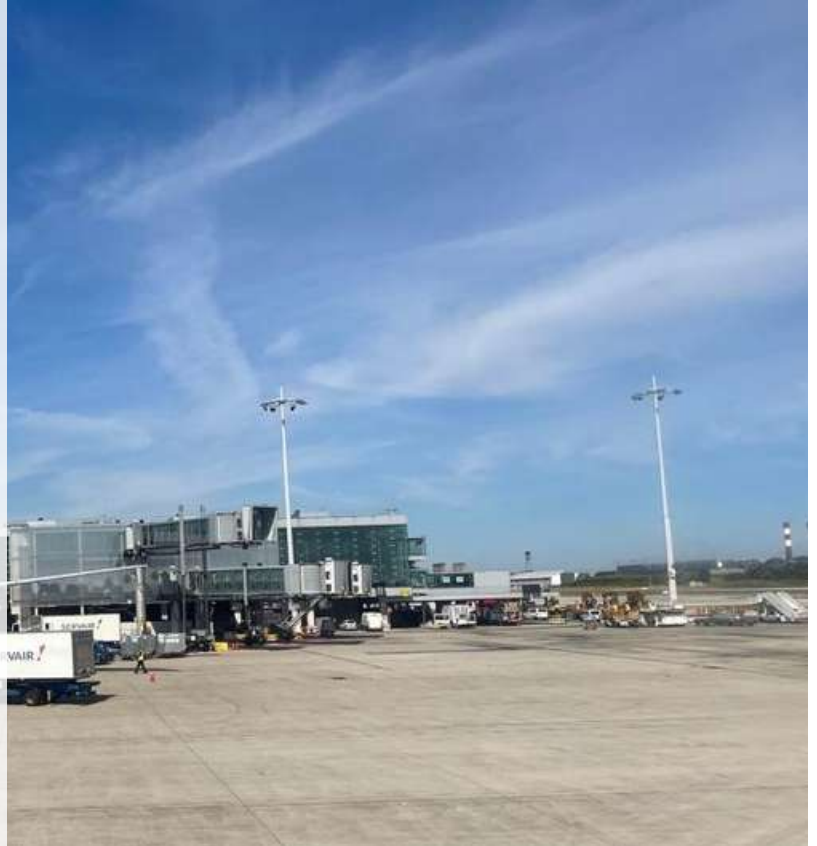


The CDMX cable car (Mexico City) is an aerial transport system that offers a unique experience. It connects various strategic points of the Mexican capital, offering a panoramic view of the city and its surroundings. It is protected against lightning hazards due to the installation of several Active 1D®, ensuring the safety of residents and tourists who enjoy this popular attraction.



CHARLES DE GAULLE AIRPORT IN FRANCE

This international airport is a major gateway to Paris, offering connections to destinations around the world. It welcomes millions of passengers every year. Franklin France has installed lightning protection systems to ensure the safety of passengers and staff.





CONAKRY AIRPORT IN GUINEA

Conakry Airport in Guinea serves international destinations. With the installation of lightning conductors by Franklin France, the safety of passengers and staff is ensured.



TOLL HIGHWAY IN SENEGAL

Lightning protection is essential to keep infrastructure safe, including highway tolls. In Senegal, we provided lightning protection solutions for tolls located along highways. This guarantees the safety of workers and road users, while preserving infrastructure against potential damage.





PORT COTONOU IN BENIN

The port of Cotonou is one of the main commercial ports in the region, playing a vital role in maritime trade and logistics. To ensure port infrastructure security, Franklin France has provided lightning protection solutions by installing active lightning rods. That ensures the safety of workers and buildings, enabling the proper functioning and reliability of business operations.

HISTORICAL MONUMENTS





THE BIG BUDDHA IN THAILAND

The Big Buddha in Phuket, measuring 45 meters in height and 25 meters in width, is positioned as one of the most imposing Buddha statues in Thailand.

In an effort to preserve this treasured place of worship and meditation for local Buddhists and tourists, Franklin France provided lightning protection for the Buddha statue. At the top of it there is an active lightning rod. This measure aims to ensure the safety and integrity of this important spiritual symbol, allowing visitors to continue to enjoy its sacred essence in peace.

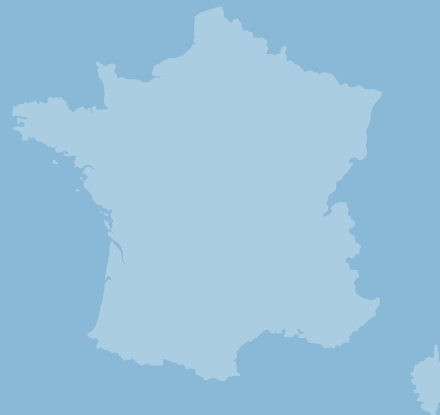




ASTERIX PARK IN FRANCE



This photo of the famous statue in Parc Astérix highlights the presence of an active lightning rod from Franklin France. It is important to note that the company also protects a number of other amusement parks.

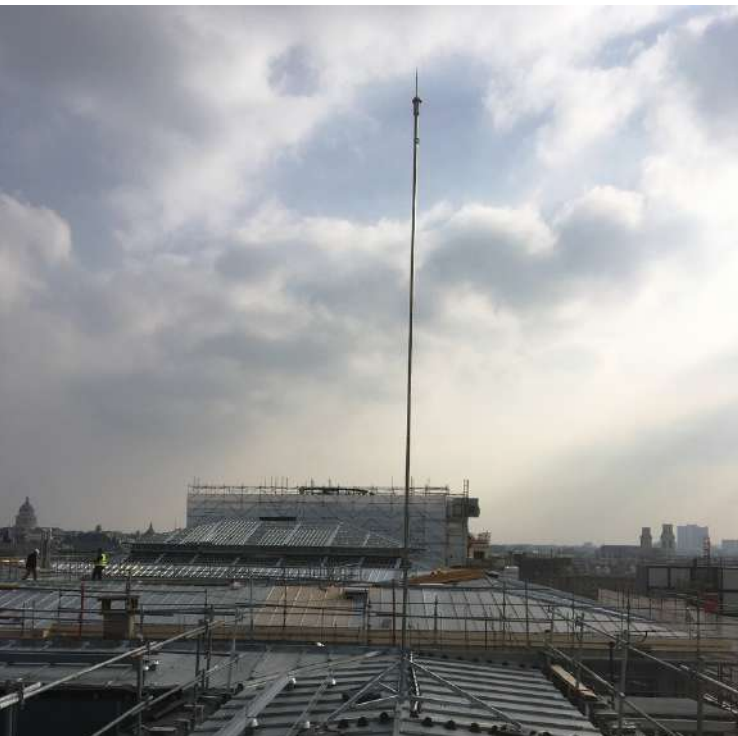




SAMARITAINE

SAMARITAN IN FRANCE

La Samaritaine, an iconic department store located in Paris, is a must-visit spot for shopping enthusiasts and visitors looking for a unique experience in the capital. To preserve its status, Franklin France helped to protect the building from lightning by installing an Active 2D®.





BIG MOSQUE OF ALGIERS

This mosque is the largest in Africa and the third in the world. Franklin France covered the Active 2D® lightning conductor with gold leaf. Moreover, we proposed gilding on the auricular ball and the crescent moon measuring 6.50 meters, using a 23.4 carat gold leaf.





AYUTTHAYA TEMPLE IN THAILAND

The Ayutthaya Temple is a historic and cultural site of great importance. It is known for its magnificent ruins of temples and stupas dating from the ancient kingdom of Ayutthaya. To preserve its historical value, Franklin France has played an essential role in installing an active lightning conductor to provide lightning protection. Now, visitors can safely enjoy the beauty and spirituality of this exceptional location.



A low-angle, upward-looking photograph of an industrial facility. The image features a complex network of dark metal pipes, walkways, and railings that converge towards the top of the frame. A prominent, thick vertical pipe runs diagonally from the bottom center towards the top right. The background is a bright blue sky filled with scattered white clouds. The overall composition conveys a sense of height and industrial scale.

INDUSTRIES



UPI IN THE DOMINICAN REPUBLIC

We provided lightning protection for the main carton packaging production factory, which is UPI company. Important is that this company is the largest and only cardboard packaging factory in the Dominican Republic. Our Active 1D® lightning rods were used to secure the building as well as the main chimney, the storage warehouse and production building.





HIGH RISE PYLON IN SENEGAL

Franklin France also provides protection for high-rise towers. This is the case in Senegal, where the Active ID® system is used. The photos also show the down conductor attachments and accessories.



CARDIOLOGY CENTER IN THE DOMINICAN REPUBLIC

Thanks to the installation of four Active 4D®, the security of the building was optimally ensured. This solution offers advanced protection against lightning, guaranteeing the reliable preservation of the site. This advanced system is equipped with four essential features: protection, detection, analysis and e-counter.





INGENIO PANTALEON IN GUATEMALA

Franklin France expands its portfolio by adding an additional reference in the industrial category. This time, a cane sugar and rum manufacturing plant received lightning protection with the installation of 15 Active 2D®.





INSTITUTIONS



THE PRESIDENTIAL PALACE IN MADAGASCAR



As the president's official residence, the presidential palace plays a key role in Madagascar's political and diplomatic affairs. Protecting it is essential to make it a great place for meetings with foreign dignitaries, official ceremonies and other important events. To ensure the security of this iconic location, we have installed a lightning protection system using Active 2D® technology.





HEADQUARTERS OF THE WORLD BANK IN CONGO - BRAZZAVILLE

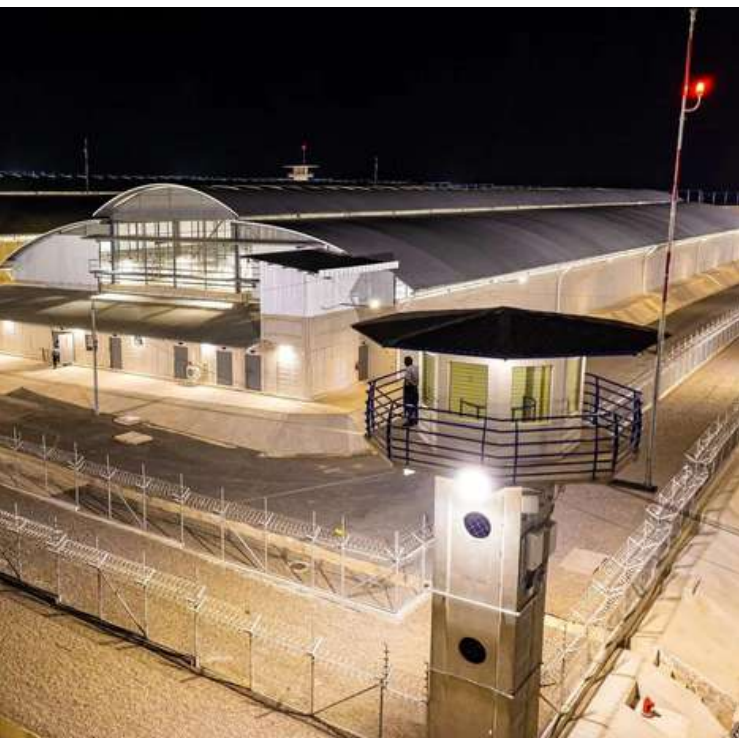
We are proud to have a new reference of prestige, thanks to the protection of the brand new headquarters of the World Bank in the country. An Active ID®. was installed to cover the entire building. This collaboration with the World Bank demonstrates the confidence placed in the renowned quality and service of Franklin France by major international institutions. We remain committed to providing high quality lightning protection solutions to meet the needs of our customers.





JAIL SALVADOR

This new prison, inaugurated by President Nayib Bukele in El Salvador, is considered by the authorities to be "the largest prison in America". Its main objective is to reduce the influence of gangs that have exercised their power over the country for many decades. To ensure the security of the prison buildings, a total of 34 Active ID® have been installed.





HOTEL BARRIERE THE HERMITAGE LA BAULE IN FRANCE

Located in the charming seaside resort of La Baule on the French Atlantic coast, the Hôtel Barrière L'Hermitage is indeed one of the most prestigious hotels. To ensure that this hotel always retains its splendour, Franklin France has installed one of its active lightning rods.





RADISON BLU HOTEL IN SENEGAL

The prestigious Radisson Blu Hotel, located in Dakar, has called on Franklin France for its lightning protection. The protection solution used here was the Active 2D®. This approach has insured the safety of guests and protect the hotel's infrastructure, which is renowned for its quality service and luxury accommodation for business and leisure travellers.



The logo for Franklin France, featuring the word "FRANKLIN" in white on a blue background and "FRANCE" in blue on a white background, with a diagonal line crossing through the text.

FRANKLIN
FRANCE

CONTACT

FRANKLIN FRANCE

13 RUE LOUIS ARMAND,
77330 OZOIR-LA-FERRIÈRE
FRANCE

TEL : +33 (0)1 60 34 54 44

FAX : +33 (0)1 64 40 35 43

franklin@franklin-france.com

contact@franklin-france.com

WWW.FRANKLIN-FRANCE.COM



FRANKLINFRANCE



Follow us now on LinkedIn so you don't miss any of Franklin France's latest news and exciting projects !