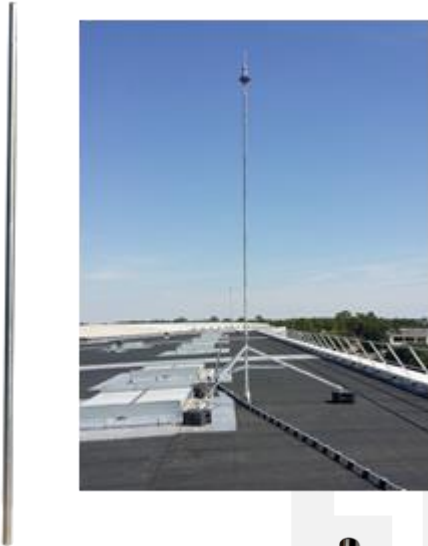


Elevation rod, corrosive atmosphere



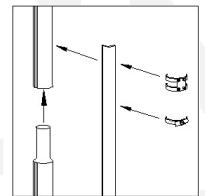
This mast, in stainless steel, is composed of one tube with a length of 2 meters bored at its extremities (Ø28mm), a fitting with a coupling (AFC3434MR) and four collars which maintain the down conductor type strip coil.

The elevation rod is used for raising all the lightning conductors from FRANKLIN France range. Each element fits by covering of 150mm, avoiding bolting. With very high resistance, it is possible to associate 3 elevation rods and one lightning conductor without guying for a wind speed which can reach 160 km/h. Above 3 elevation rods, a calculation note shall be supplied by our technical department.

Delivered with 4 clamping collars and 1 coupling (AFC3434 MR).



Elevation rod head with AFC3434MR coupling (or AFC2634MR)



Elevation rods covering and conductor fixing

Characteristics

Reference :	AFC0034MR
Type of installation :	Lightning rod
Assembly :	Fitting in the lightning rod and/or elevation rod, installation and clamping with FRANKLIN France fixing system according to the height and snow and wind resistance
Use :	Allows to raise a lightning rod to increase its radius of protection
Display :	-
Contents :	1 elevation rod of 2m AFZ 0034 MR / 1 coupling AFC 3434 MR 4 collars AFH 1051 CS
Material :	304 L stainless steel
Dimensions :	2000 x Ø34 mm (inner bored Ø28 mm)
Weight :	5,900 kg
Standards:	-

Franklin Technologie® - A full range of lightning and overvoltage protection.

In the continue framework of its products, Franklin France shall be entitled to modify specifications without notice